

# mUNIT BASE MOUNT

ONLY FITS  
ERICSSON EQUIPMENT

## THE mUNIT BASE MOUNT

is designed as a base component in a building system for mUnit products. By only using the mUnit Base Mount it's possible to install one mRRU or mRBS on wall. Along with additional accessories (Pole Clamp, Hose Plate etc.) it is also possible to install on masts, towers or other vertical / horizontal structures.

## FLEXIBILITY

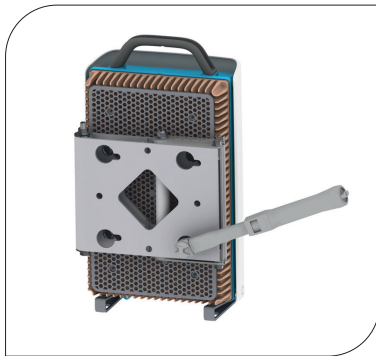
The mUnit Base Mount can either be installed in vertical position used for tilt function or horizontal position used for azimuth function. If needed it's possible to combine both features by using two Base Mount units mounted cross wise to achieve both azimuth and tilt function. A degree scale on one of the link arms helps the installer to reach exact orientation.

## QUALITY

All components are made of anodized aluminium or acid proof stainless steel which gives the support excellent corrosion resistance.

## EASY ASSEMBLY

Handling and installation is very easy thanks to the light weight material of the product.



## ORDER AND TECHNICAL INFORMATION

DRAWING NO:	CD 990705			
FUNCTION DESCRIPTION:	mUnit Pole Clamp for attachment of mUnit Base Mount on mast, towers or other vertical/horizontal structures.			
MECHANICAL DATA:				
Mounting Plates:	Aluminium, nature anodized 20my			
Drill template for wall:	Included, square c/c 140 mm (5,5 in) screw dimension M10			
Link arms:	Blast acid proof stainless steel			
Tilt function:	On wall max down tilt: 23 degree			
Azimuth function:	On wall max +/- 45 degree			
Fasteners:	Acid proof stainless steel			
PACKAGE DIMENSIONS:	LENGTH:	WIDTH:	HEIGHT:	WEIGHT:
	260 mm (10,2 in)	240 mm (9,5 in)	40 mm (1,6 in)	2.5 kg (5,5 lb)

NOTE! RRU is not included.