

PILOT ERA

The Revolutionary 360° VR Camera
for Business



Overview

8K High-Quality Video & Photo

Pilot Era uses top-class hardware and carefully optimized in-camera stitching algorithms, so that you can enjoy extremely sharp details in every frame of 8K 360° videos and images. Its large F2.2 aperture aspherical fisheye lenses and professional-grade Sony CMOS sensors accurately capture every wonderful moment. Plus, you can activate professional modes like HDR or Time-lapse, as well as adjust dynamic range, white balance, exposure, and other parameters manually.



10 times Faster than PC

Pilot Era is an efficient 360° VR camera for creating high-quality 360° content. Unlike any other product on the market, Pilot Era does not require post-processing on PC. You can choose to enable automatic stitching (while shooting) or simply click to stitch 8K videos/photos in camera. Benefited from a powerful CPU and a faster UFS 2.0 storage system, Pilot Era is capable to save you a lot of time and justify every minute of your work!

3.1" Touch Screen for Easy Control

While you still have the option to control device with our Pilot Go App, you may also play with the high-definition integrated touch screen to easily try out all options and parameters. The sensitive and accurate touch screen makes everything, including stitching, previewing, publishing, and adjusting settings, much simpler.



PilotLive 8K

Pilot Series Cameras can stream up to 8K panoramic videos with a single click. Thanks to a revolutionized algorithm brought by Labpano, no cumbersome connect to the server and pay expensive cloud fees needed, with the Labpano PiPlayer, you can watch 8K Live in your computer or VR Headsets.





PilotSteady™ with 9–Axis Stabilization

Pilot Era achieves an outstanding stabilization performance with a set of patented technologies based on advanced 9–axis gyroscope. Without the need of post–processing for stabilization, it allows you to upload or live stream to multiple online platforms with steady pictures, in various scenarios and environments.



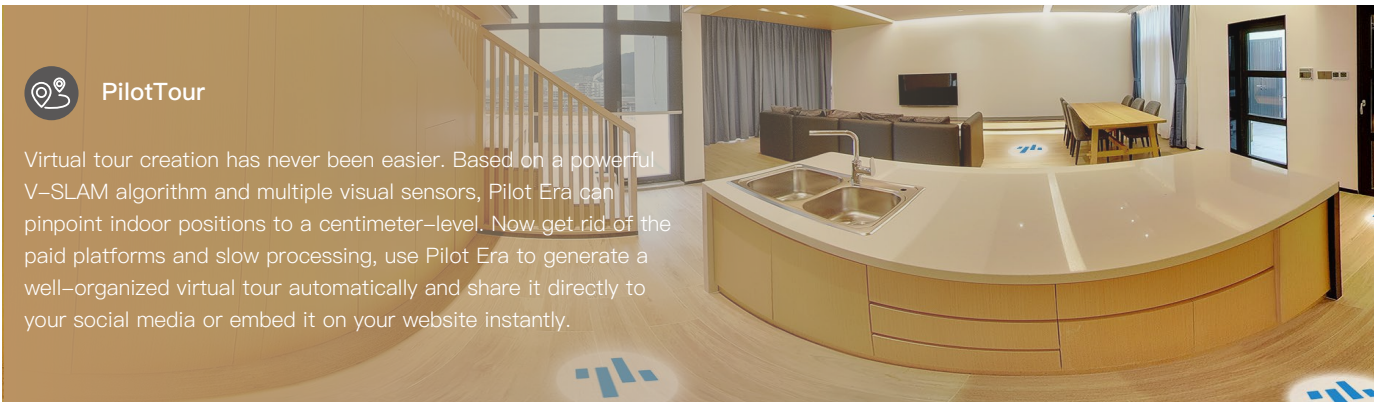
Pilot Open System

Our custom Android operating system is used in Pilot Era. The Pilot Open System allows you to develop and customize a bunch of functions in the camera to fit in with your business needs. With more resources and business clients joining this open system, Pilot Era is becoming a more efficient tool for all.



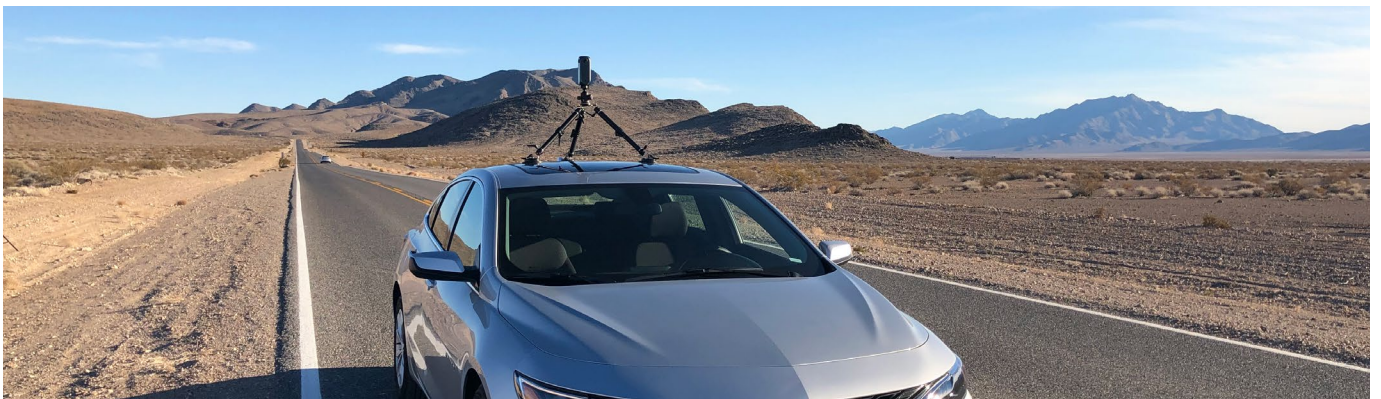
PilotTour

Virtual tour creation has never been easier. Based on a powerful V–SLAM algorithm and multiple visual sensors, Pilot Era can pinpoint indoor positions to a centimeter–level. Now get rid of the paid platforms and slow processing, use Pilot Era to generate a well–organized virtual tour automatically and share it directly to your social media or embed it on your website instantly.



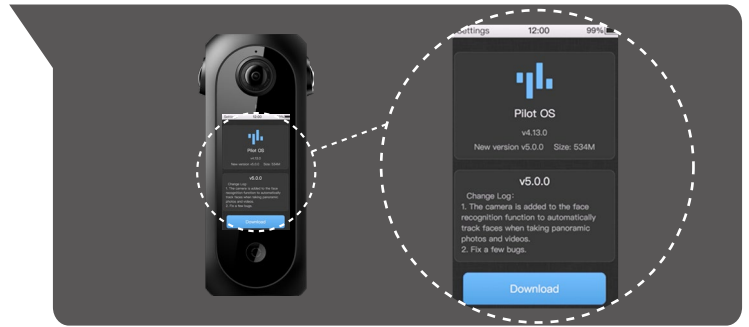
Optimized for GSV Photographers

Pilot Era is carefully optimized for Street View photographers. Being a GSV Pro camera, it has built–in ultra–precise GPS and supports one–click upload to Google Maps and creating native Google Street View with blue lines on the map! GSV photography has never been easier!



The "Pilot" Program

Pilot Era is an evolving 360° camera. You will receive over-the-air software/firmware updates on a regular basis that ensures better performance and even new features now and then.



Send to Google Drive/Dropbox

Not enough storage space in your PC? Tired of transport your footages to PC first? Panic for the failure from one in the seven expandable SD cards? Stay calm to upload your footages to major cloud drive platforms seamlessly and more efficiently, anytime and anywhere.



Intuitive OS based on Android

Pilot OS is developed on Android in the hope of getting users familiar as quickly as possible. The intuitive interaction design makes it possible to skip a long learning process.



512GB Large UFS Storage

Loaded with 512GB UFS 2.0 high-speed storage, Pilot Era easily stores over 6.5 hours of 8K videos or 26,000 panoramic photos.



7200mAh Long-Lasting Battery

With a 7200mAh removable battery, Pilot Era can shoot up to 3.5 hours of 8K videos – the longest of all 360° camera on the market.



In the Box



Pilot Era



USB Extension HUB



Adaptor



USB Type-C Cable



Extension Rod



Lens Protection Case



Wipe Cloth



User Manual



Camera Case

Tech Specs

General

Size
61.4mm x 61.4mm x 159mm

Weight
750grams (26.46 ounces)

Battery
Video recording: 3.5 hours (8K)
Live streaming: Up to 3 hours
Built-in 7200mAh removable battery

Display
3.1-inch (diagonal) TFT-LCD
Multi-Touch display

Lenses
4x F2.28 aspherical fisheye lenses

Image Sensors
4 x 12MP Sony CMOS sensors

Operating Ambient Temperature
0° to 45° C (32° to 113° F)

Audio
Stereo recording / AAC
Support external mic

Motion Sensors/GPS
G-sensor, Gyro-sensor,
Magnetic sensor,
Built-in GPS

Capacity
RAM: 6GB LPDDR4
ROM: 512GB UFS

Pilot Go APP
iOS/Android

Video

Resolution/Frame Rate
Real-time stitching
8K (7680*3840) 7fps
6K (5760*2880) 15fps
4K (3840*1920) 30fps
2K (1920*960) 30fps
In-camera stitching
8K (7680*3840) 24fps
6K (5760*2880) 30fps
4K (3840*1920) 30fps

Format
MP4

Coding Format
H.265 / H.264

Algorithm

Stitching
Real-time stitching
Optical flow stitching

Stabilization
PilotSteady™ technology
Real-time stabilization

Positioning
Precise indoor positioning
and localization

Photo

Resolution
Real-time stitching
8192 x 4096
6144 x 3072
4096 x 2048

Format
JPG
Modes
HDR/Countdown/Hide
Photographer

Photo-Manual Settings
Exposure Time: 1/3200 ~ 1/15
ISO Range: 50 ~ 1600
EV: -4 ~ 4
WB: Auto, Manual

Connection

Ethernet Port
RJ45: 100M/1000M (Optional)

WiFi
802.11 a/b/g/n/ac.

Bluetooth
V4.1

Live Streaming

Resolution/Frame Rate
8K@24fps*
4K@30fps

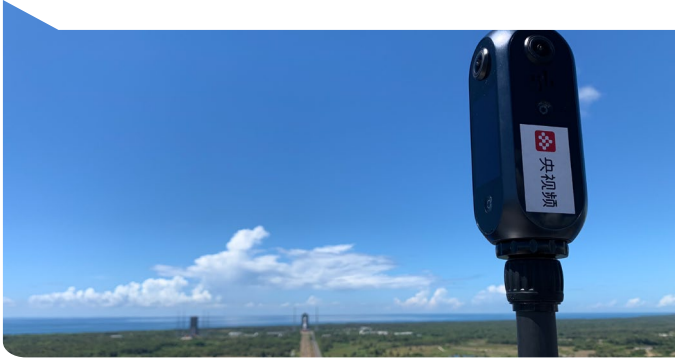
Protocol
RTMP/SRT/RTSP

* Simply install Labpano PiPlayer software on your computer and VR headset for in-camera 8K Live Streaming.

Application Cases

• Event Live-Streaming

Along with the application of 5G technology, live streaming is seeing new changes: more 360 live streaming and video content offer viewers a new choice and a better visual experience. Pilot Cameras and Labpano's panoramic live streaming technology have been widely used in many major projects, e.g., 2020 Re-measure Height of Mount Everest, Tianhe Space Station Launch, 2020 CCTV Five-a-side National Football League, and more.



* Pilot One (EE) was used for 8K live streaming and recording of 2020 Tianhe Space Station Launch.

• Event Live-Streaming

360 videos and live streaming is gaining its reputation for bringing out the subjectivity of news report. As a solid case, Pilot Cameras are empowering reporters and the media industry to gain and distribute 360 content of premium quality easily and efficiently. Anyone can operate it simply like using a smartphone to capture and share key moments in a format that better serve the viewers.

* Media is streaming and recording 2019 BRICS Future Internet Innovation Forum with Pilot Era.



• Training Education

Labpano, together with our partners in various fields, shapes the future of training and education in schools, medical organizations, large group companies, and more. The immersive experience provides better training results and more equal education opportunities.

* Students at Tianfu No.7 Middle School, Chengdu, is streaming their class with children in remote mountains at Zhaojue Town, Sichuan.



• Medication VR

Labpano's technologies and products are applied in medical organizations to achieve better-quality and more cost-effective surgery training that covers a larger audience and helps operate remote surgery in a more concise and detailed manner.

* Peking University Cancer Hospital is doing remote surgery training through 5G+VR, supported by Pilot Era.

- **VR Tour**

VR Tour is a transformational visual tool and a powerful boost for the real estate industry. It brings a direct, immersive, and realistic 360 view of every corner inside a house for potential buys and other clients to easily view on their smartphones or PCs. With Pilot Cameras, anyone can shoot a premium-quality and shareable VR tour with much less trouble and cost.



* A 360 Tour of a villa at Phoenix City, LA, USA, shot with Pilot Era, by VR360 HOME TOURS.

- **Street View**

Street View is a virtual representation of our surroundings, consisting of millions of panoramic images. Street View is a great way for brands to distinguish themselves online while engaging with new people. Street view images have become an emerging data source for urban research.

Pilot Cameras are powerful devices for indoor visual SLAM (centimeter-level precision grade) and GPS-based outdoor mapping.



* Map Your Town updates the Polokwane Street View with Pilot Era.

Shenzhen Pisoftware Technology Co., Ltd.

Web: www.labpano.com

E-mail: marketing@labpano.com

Add: C11-B, TCL International E City, 1001 Zhongshanyuan Road, Nanshan District, Shenzhen City, 518057, P.R.China

